

# WELDLOK® STEEL GRATING STAIR TREADS

## Stair Treads

Weldlok® stair treads can be supplied in Series 30, 40 & 60 forgebar grating. Treads may be selected using the Recommended Width and Recommended Max Length tables. Non-standard treads can also be supplied on request, please consult our sales department.

## Ordering Stair Treads

1. Select from the tread types shown (T1 to T6).
2. Refer to Recommended Max. Lengths table. Select a Load Bar Size and Series with a maximum length equal to or greater than the required tread length. For example, if the required tread length is 1100mm, the Series 40 grating with 32 x 5 load bars (A40-325) would be appropriate.
3. From the Recommended Widths table, choose a width that corresponds to the tread type and Series selected. For example, based on the Series 40 grating and a T1 tread, the tread width would be either 125, 165, 205, 245, 285 or 325mm.

Example would be:

TREAD TYPE T1 ~ 1100 x 285 FROM A40 – 325

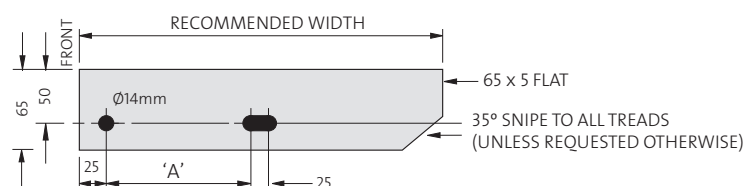
RECOMMENDED MAXIMUM LENGTHS (mm)			
LOAD BAR SIZE	25 x 5	32 x 5	40 x 5
SERIES 30	900	1300	1600
SERIES 40	750	1200	1500
SERIES 60	500	800	1300

RECOMMENDED WIDTHS (mm) *							
TREAD TYPES T1 TO T6							
SERIES 30	125	155	185	215	245	275	305
SERIES 40	125	165		205	245	285	325
SERIES 60	125		185		245		305

\*Note: In order to comply with AS1657 a minimum tread width of 225mm is required.

BOLTED CONNECTIONS							
END PLATE HOLE CENTRES (mm)							
'A'	45	75	75	100	100	100	100

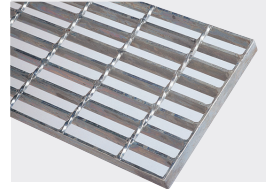
## Standard End Plates for Bolted Threads



Note: Special End Plate Hole Centres available on request.

## Tread Types

**T1** Welded fixing – No nosing



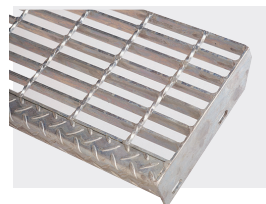
**T2** Bolted fixing – No nosing



**T3** Welded fixing – Floor plate nosing



**T4** Bolted fixing – Floor plate nosing



**T5** Welded fixing – Abrasive nosing



**T6** Bolted fixing – Abrasive nosing

