

Weldlok®

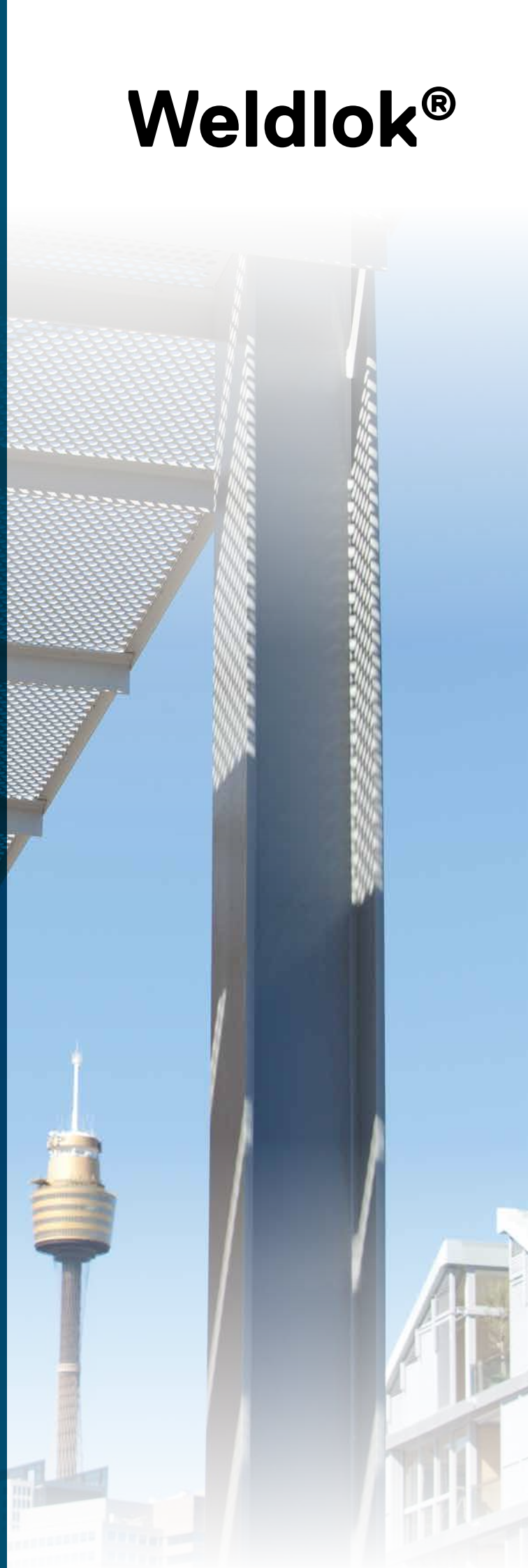
MASTERMESH® PERFORATED METAL

Technical Guide

The Weldlok® brand
is proudly owned by

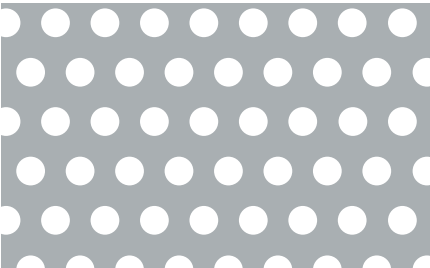


NEPEAN
Building &
Infrastructure

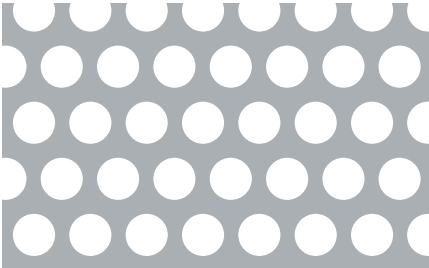


STANDARD PERFORATED SHEETS

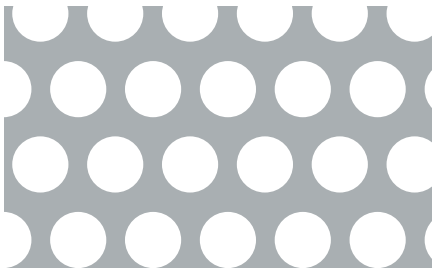
Stock Patterns – Ready for despatch



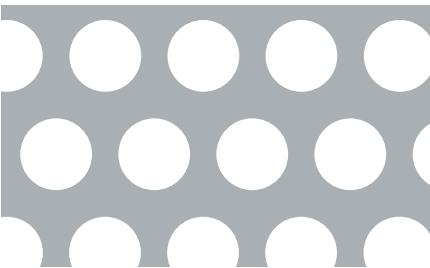
Product code P0335616



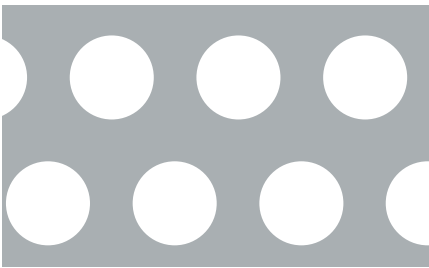
Product code P0486416



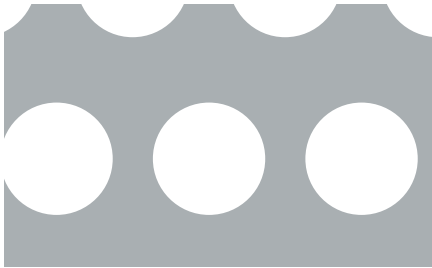
Product code P0648516



Product code P0801116



Product code P0951416



Product code P1271716



Product code P1912530

The above templates do not represent actual hole size.

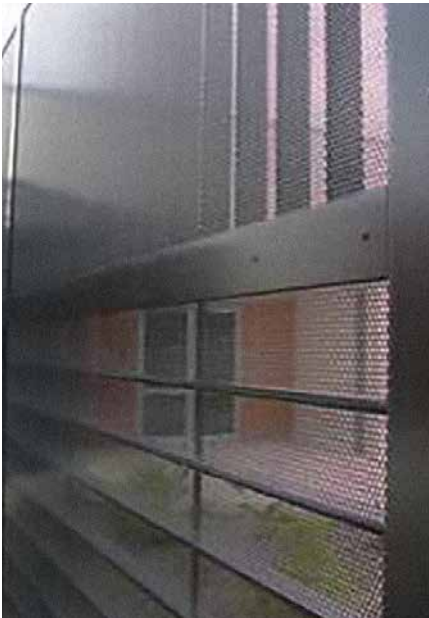
Standard Perforated Sheet Specifications

Product Code	Hole Size mm	Pitch mm	Open Area %	Thickness mm	Sheet Size mm	Weight kg/m ²
P0335616	3.25	5.59	30.0	1.6	2440x1220	8.7
P0486416	4.76	6.35	51.0	1.6	2440x1220	6.1
P0648516	6.35	8.50	51.0	1.6	2440x1220	6.1
P0648530	6.35	8.50	51.0	3.0	2440x1220	11.5
P0801116	8.00	11.11	47.0	1.6	2440x1220	6.6
P0951416	9.50	14.30	40.0	1.6	2440x1220	7.5
P0951430	9.50	14.30	40.0	3.0	2440x1220	14.0
P1271716	12.70	17.27	49.0	1.6	2440x1220	6.4
P1271730	12.70	17.27	49.0	3.0	2440x1220	11.9
P1912530	19.05	25.40	51.0	3.0	2440x1220	11.5

STANDARD PERFORATED SHEETS



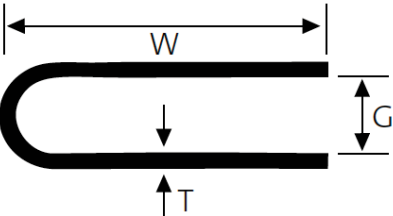
Fencing at Concord Hospital – P0648516



Fencing at Concord Hospital – P0648516



Balcony In-fill Panels – P0951430



Steel Edge Trim (SET)

Product Code	Material	Standard Length	Weight W	Gap G	Thickness T	Weight kg/length
SET 2	Steel	2440	12	2	1.0	0.61
SET 4	Steel	2440	19	4	1.2	1.22

Mastermesh® Steel Edge Trim (SET) provide an alternative to conventional methods of framing and installation. The use of SET provides a smooth continuous frame, removing the danger of sharp serrated edges from cutting and fabrication.

MATERIALS

Perforated metal sheets can be supplied in the following materials:

- > Untreated mild steel
- > Galvanised mild steel



SET 2 used to accommodate P0486416 – Decorative shop fitting



NEPEAN Building and Infrastructure

Originally founded as Graham Group, NEPEAN Building & Infrastructure is one of Australia's largest fully integrated manufacturer and supplier of metal products for the industrial and commercial building sectors.

Weldlok®

Grating, handrail and drainage products

Galintel®

Galvanised steel lintels

Mastermesh®

Expanded and perforated metals

Galserv®

Hot-dip galvanising

National Sales Branches

New South Wales

117-153 Rookwood Road
Yagoona NSW 2199

P: + 61 2 9707 5088
E: nsw.bi@nepean.com

Victoria

171 Derrimut Drive
Derrimut VIC 3026

P: + 61 3 8353 3701
E: vic.bi@nepean.com

Queensland

14 Griffin Crescent
Brendale QLD 4500

P: + 61 7 3633 1333
E: qld.bi@nepean.com

Western Australia

98 Campbell Street
Belmont WA 6104

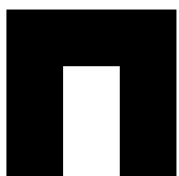
P: + 61 8 9230 8466
E: wa.bi@nepean.com

Head Office

117-153 Rookwood Road
PO Box 57
Yagoona NSW 2199
P: + 61 2 9707 5000
E: bi@nepean.com

Information contained in this brochure is supplied in good faith and with the view to assist the user in the correct selection of our products. While every care is taken to ensure that the information contained in this brochure is correct, no warranty is made nor is any condition expressed or implied. As the use of products sold is beyond our control, a condition of purchase is that the purchaser accepts responsibility for ensuring that products purchased are suitable for the intended use. NEPEAN Building & Infrastructure is committed to continual product improvement and therefore reserves the right to change details and designs without notice. All dimensions listed in this brochure are nominal sizes.

© NEPEAN Building & Infrastructure, June 2018. [Updated March 2023]



NEPEAN
Building &
Infrastructure

www.weldlok.com.au