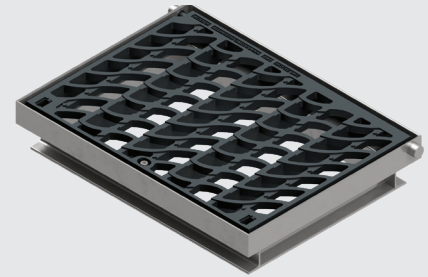


WA SPECIFIC DUCTILE RECTANGULAR

CID, STD & WGD



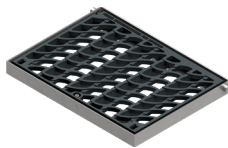
CONTACT OUR SALES TEAM FOR THE MOST SUITABLE PRODUCT FOR YOUR REGION

The Weldlok range of region-specific ductile covers are made from Grade 500/7 ductile iron, designed and engineered to specifications as required by councils and governing authorities.

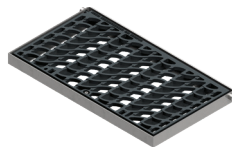
The below selection of rectangular ductile covers and slotted weave grates meets the requirements for use in Western Australia. The WA-specific range includes 2-Part solid top or infill covers for Water Corp, and slotted weave grates in various sizes. Contact our sales team for advice on the most suitable product for your region and application.

FEATURES

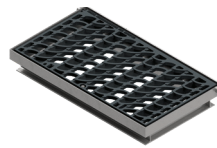
- Grade 500/7 ductile iron
- Solid top and infill covers include Water Corp markings and bolt-down security
- Ductile grates available in standard or high frames
- Class loads in accordance with AS 3996:2019
- Compliant with requirements for Western Australia



WGDSR0650X0450D



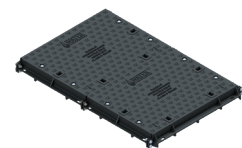
WGDSR0900X0450D



WGDSR0900X0450DDF



CID2PWC0900X0600D



STD2PWC0900X0600D

Product Code	AS 3996:2019 Load Class	Product Description	Clear Opening (mm)	Cover Weight (mm)	Frame Depth (mm)
2-PART COVERS					
CID2PWC0900X0600D-C	D	Infill Cover Ductile 2-part 900x600mm Water Corp Cover & Frame Class D	900 x 600	52	81
STD2PWC0900X0600D-C	D	Solid Top Ductile 2-part 900x600mm Water Corp Cover & Frame Class D	900 x 600	52	84
SLOTTED WEAVE GRATES					
WGDSR0650X0450D-C	D	Slotted Weave Ductile Sq/Rec 650x450mm Grate Single Part Grate & STD Frame Class D	650 x 450	43	65
WGDSR0650X0450DDF-C	D	Slotted Weave Ductile Sq/Rec 650x450mm Grate Single Part Grate & Deep Frame Class D	650 x 450	43	140
WGDSR0900X0450D-C	D	Slotted Weave Ductile Sq/Rec 900x450mm Grate Single Part Grate & STD Frame Class D	900 x 450	57	65
WGDSR0900X0450DDF-C	D	Slotted Weave Ductile Sq/Rec 900x450mm Grate Single Part Grate & Deep Frame Class D	900 x 450	57	140