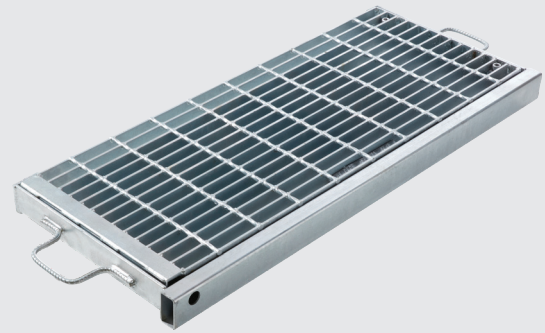


GULLY GRATE

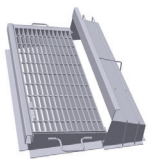
QLD & WA



CONTACT OUR TEAM FOR THE MOST SUITABLE PRODUCT FOR YOUR REGION

Product Code	AS 3996:2019 Load Class	Pit Clear Opening Nom. (mm)	Frame Overall (mm)	Frame Depth (mm)	Hinged	Usage
QLD						
BCCGG*	D	900 x 600	1122 x 676	90	Yes	Brisbane CC
PGFEHI0600x0600C-C	C	600 x 600	700 x 700	50	No	IPWEAQ & BCC
PGFEHI0600x0900C-C	C	600 x 900	700 x 1000	60	No	IPWEAQ & BCC
PGFEHI1200x1200C-C	C	900 x 900	1230 x 1230	75	No	IPWEAQ & BCC
DG1200X1200I-D	A	1200 x 1200	1398 x 1398	830	Yes	Dome grate for IPWEAQ & BCC
DG0600X0600I-C	A	600 x 600	750 x 750	580	Yes	Dome grate for IPWEAQ & BCC
DG0600X0900I-C	A	600 x 900	750 x 1050	580	Yes	Dome grate for IPWEAQ & BCC
DG0900X0900I-C	A	900 x 900	1050 x 1050	580	Yes	Dome grate for IPWEAQ & BCC
GG-GC0900x0600D-C	D	900 X 600	1050 x 615	81	Yes	MRD & TMR
WA						
GG-MRWA-GT-GRATE-D-C	D	920 x 425	1100 x 605	90	No	MRWA Gully Grates
GG-MRWA-HN-GRATE-D-C	D	920 x 425	1100 x 605	280	No	MRWA Gully Grates

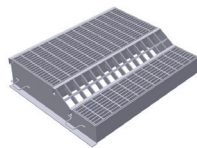
* Diamond Grating



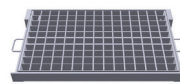
GG57-0900X0400D-C



GG52-0900X0400D-C



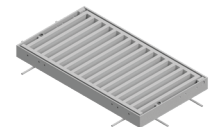
GG65-1188X1008CD-C



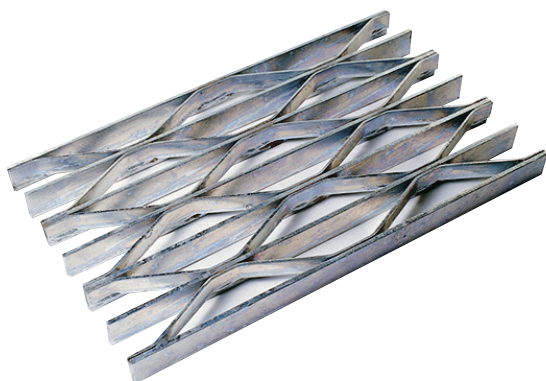
GG-GC0925X0600D-B



BCCGG*



SPECIFIC TO WA
GG-MRWA-GT-GRATE-D



* DIAMOND GRATING PATTERN

Ideal for areas with multi-directional traffic or in environments with turning forklifts, trucks or similar heavy vehicles. The Weldlok diamond grating design improves grip, reducing the risk of losing traction in wet weather as it maximises water runoff. For mild steel grates in a Class E and higher environment, a Weldlok diamond grating pattern must be used to meet AS 3996:2019.

SEE MORE ON PAGE 20